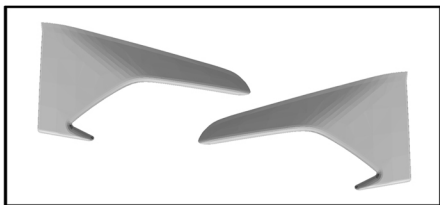




## Sterckenn Carbon Fiber Inserts - SN-F87-C1 (BMW M2 F87)



Before installing your STERCKENN Carbon Fiber Inserts, read through the entire installation procedure and check to make sure all items are present. For any questions regarding fit, missing parts or instructions that are unclear to you please contact Sterckenn directly : [info@sterckenn.com](mailto:info@sterckenn.com)

### Packaging List for Sterckenn Carbon Fiber Inserts - SN-F87-C1

Sterckenn Description	Sterckenn Part Number	Qty
M2 Carbon Fiber Inserts	SN-F87-C1	2
Installation Instruction	-	1

### LIMIT OF LIABILITY STATEMENT

The information contained in this publication was accurate and in effect at the time the publication was approved for printing and is subject to change without notice or liability. Sterckenn reserves the right to revise the information presented herein or to discontinue the production of parts described at any time.

This product is recommended for off-road use only. Please check your local laws for ensure legality when using this product on public roads and highways. In areas where this product is not legal for road use it is sold strictly for off-road, track or show use only.

Sterckenn assumes no responsibility for damages occurring from misuse, abuse, improper installation, improper operation, lack of responsible care, or all previously stated reasons resulting from incompatibility with other manufacturer's products and/or systems.

### READ IMPORTANT SAFETY CAUTIONS AND WARNINGS BEFORE PROCEEDING

- 1-Please perform the installation carefully. There is a possibility that the product can fall off during driving and cause an accident.
- 2-When there is oil and dirt on the adhesive surface, please degrease it using a degreaser so the double-sided tape is always clean. Do not use any organic solvents (like paint thinner or gasoline, etc.).
- 3-Please perform the installation at room temperature (20°C). The adhesive force of the double-sided tape is significantly reduced in temperatures under 15°C and it can cause peeling.
- 4-After installation, it will take time for the two-sided tape to show its original adhesive force. Avoid washing the car for 24 hours. Moreover, be careful not to expose the car to rain for about 6 hours
- 5-Please check if the double-sided tape is firmly attached.
- 6-We do not recommend processing or modifying the product.

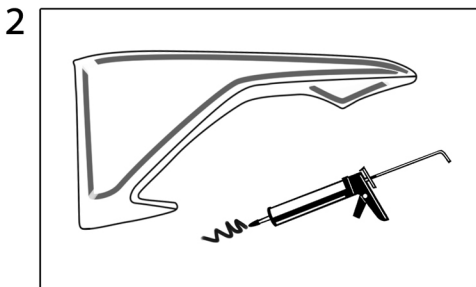
### WORK SAFELY!

Perform this installation on a good clean level surface for maximum safety and with the engine turned off.



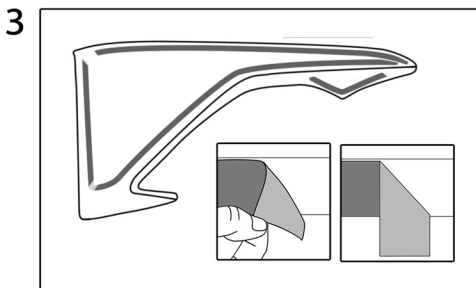
The areas being bonded must be completely dry, clean and free from wax or grease.

Clean the bonding surface on the car with a proper cleaning agent and make sure it is free from any type of grease.

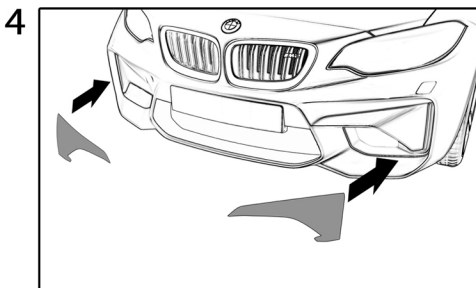


Use professional glue additionally to guarantee the quality of the fitment.

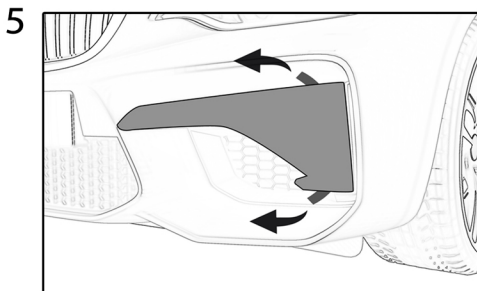
Don't apply the glue on the surface with adhesive film (tape) !



Remove the adhesive backing film just enough to form small tabs .

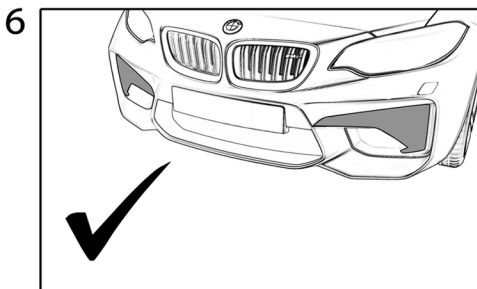


Position the Inserts properly on the edge of the bumper.

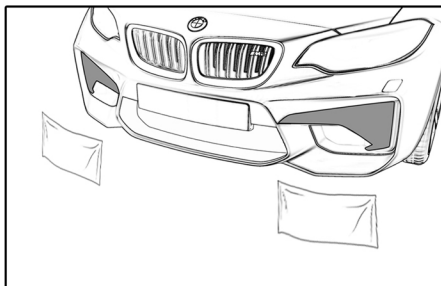


Pull adhesive backing films in stages.

Press the Carbon Inserts firmly onto the bumper.



Congratulations ! You have completed the installation of the Sterckenn Carbon Inserts



Sterckenn suggests to use clear bra films on carbon fibre products to protect it's finish from scratches, rock chips, stains and other damaging elements. It will help keep you carbon fibre parts genuine finish last longer.

STERCKENN SHALL NOT BE LIABLE TO REIMBURSE CUSTOMER/DEALER FOR INCIDENTAL OR CONSEQUENTIAL DAMAGES RESULTING FROM THE INSTALLATION OR USE OF ANY PRODUCT SOLD THROUGH THIS CATALOG OR ARISING OUT OF ANY BREACH OF WARRANTY. EXCEPT AS MAY BE STATED IN THIS CATALOG, STERCKENN DISCLAIMS ALL EXPRESS AND IMPLIED WARRANTIES, INCLUDING THE WARRANTIES OF MERCHANTABILITY AND FITNESS FOR A PARTICULAR PURPOSE. IN NO EVENT SHALL STERCKENN'S LIABILITY EXCEED THE PRICE PAID BY CUSTOMER/DEALER FOR PRODUCTS SOLD REGARDLESS IF STERCKENN HAS BEEN ADVISED IN ADVANCE OF ANY POTENTIAL PROBLEM OR IF A CLAIM IS BASED ON CONTRACT, TORT, STRICT LIABILITY, PRODUCT LIABILITY OR OTHERWISE. SOME STATES DO NOT ALLOW THE EXCLUSION OR LIMITATION OF IMPLIED WARRANTIES OR THEIR DURATION, OR LIABILITY FOR INCIDENTAL OR CONSEQUENTIAL DAMAGES, SO THE ABOVE EXCLUSIONS OR LIMITATIONS MAY NOT APPLY.

STERCKENN Sp. z o.o.  
25 Serwituty Str.  
02-233 Warsaw  
POLAND

[www.sterckenn.com](http://www.sterckenn.com)  
[info@sterckenn.com](mailto:info@sterckenn.com)